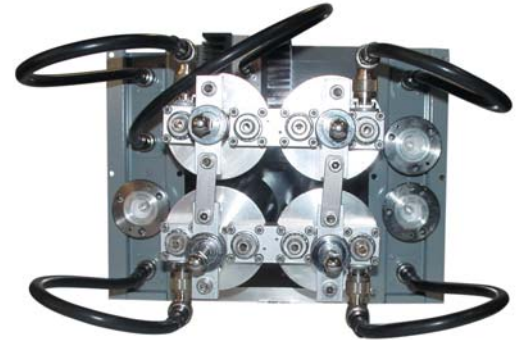
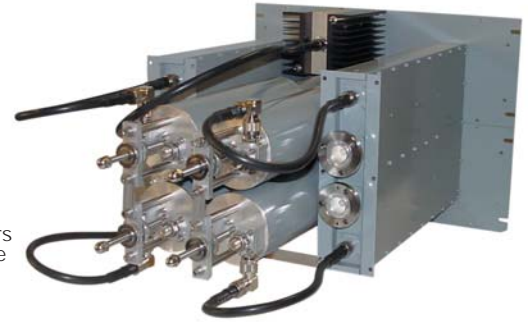


Model FDDPDC03

- 2 Channel Combiner
- Constant Impedance Type
- FM Band 87.5-108 Mhz

A constant impedance combiner consists of two or more band pass filters, two 3dB couplers and a dummy load. One or both inputs is/are narrow band, while the remaining input(s) can be broadband. Input impedance is not frequency dependent.



TYPICAL SPECIFICATIONS

Model	FDDPDC03 – Type CONSTANT IMPEDANCE
Impedance	50 Ohm
Frequency Range	87.5÷108 MHz
VSWR ±150 KHz	1.1:1 Max
Insertion Loss	at f_0 0.65 dB Max (Narrow Band Input) 0.1 dB Max (Broad Band Input)
Return Loss ±150 KHz	≤ -26 dB
Isolation ±2.0 MHz	NB to BB ≥30dB, BB to NB ≥45dB
No. of input	2 (NarrowBand+BroadBand)
No. of output	1
Connectors	Input N Female Output N or 7/16"
Max Power	300 W X 2 CHANNELS
Temperature Range	-20°C + +50°C
Color	Silver
Materials	Aluminium, silver brass, copper, PTFE, stainless steel, silver plated (min 12μ thickness)

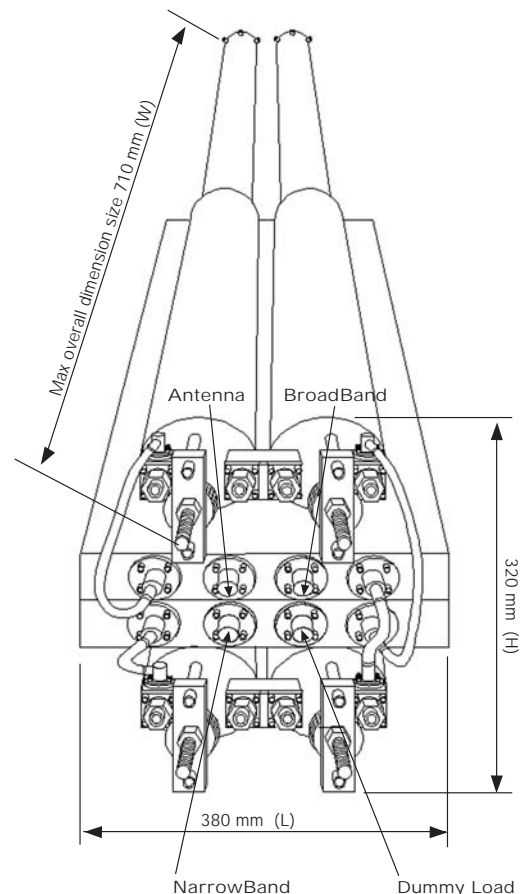
- Distortion – Free
- Low loss, high isolation
- Natural convection
- Optional group delay equalizer
- Input impedance not frequency dependent
- The frequency at the broadband input can be changed without returning the bandpass cavity filters.

No Rack Version

Dimensions	320 x 280 x 710 mm (12.6 x 15 x 28 (Max size) inch) (HxLxW)
Net Weight	≅ 21 Kg

Rack Version (optional)

Panel Size	8 HE (1 HE = 44.45 mm)
Net Weight	≅ 21 Kg



"These specifications are subject to change without notice"