



FFQC30

- 30 KW Band Pass Filter
- FM Band 87.5-108 MHz

OVERVIEW

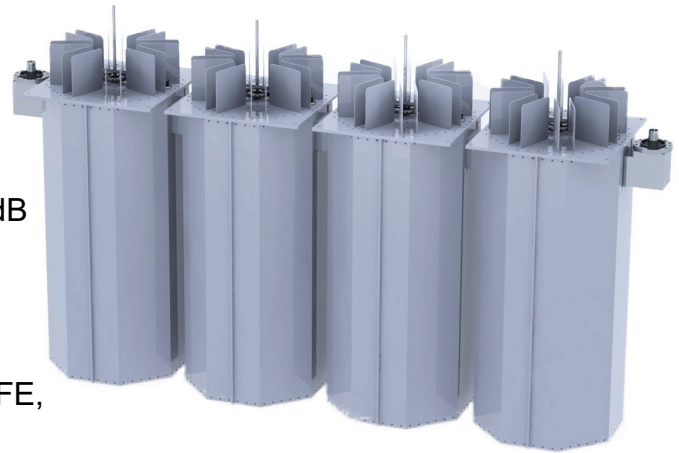
Standard resonant band pass cavity filters, available in 2, 3 or 4 cavity versions. Using our industry-leading band pass cavity filter design, they provide a one-time-buy filtering solution for broadcasters located at sites with multiple users. These filters minimize intermodulation & spurious emissions from transmission systems. The filters can be used to build combiners for two or more frequencies/channels.

FEATURES

- Modular design
- Distortion-free operation
- 4 cavity version standard configuration
- Low loss, high isolation
- Air cooling
- 2, 3, 4 or more cavity versions available

TYPICAL SPECIFICATIONS

Model	FFQC30
Impedance	50 ohm
Frequency Range	87.5 - 108 MHz
VSWR ±150 KHz	1.1:1 max
Insertion Loss	- 0.18 dB Max
Return Loss ±150 KHz	≤ -26 dB
Rejection	Per customer requirements Typical ±1 MHz it's even ≥20 dB
Connectors	3 1/8" Input / Output
Power Rating	30 KW
Temperature Range	-20°C to +50°C
Color	Enamel Gray RAL 7001
Materials	Aluminum, Brass, Copper, PTFE, Stainless Steel, Silver plating (min 12 µm thickness)
Dimensions	1400 (max height) x 2085 x 490 mm (H x W x D) 55.1 (max height) x 82.1 x 19.3 in (H x W x D)
Net Weight	approximately 120 Kg / 264.5 Lbs



Specifications are subject to change without notice
Picture shows the four cavity version