

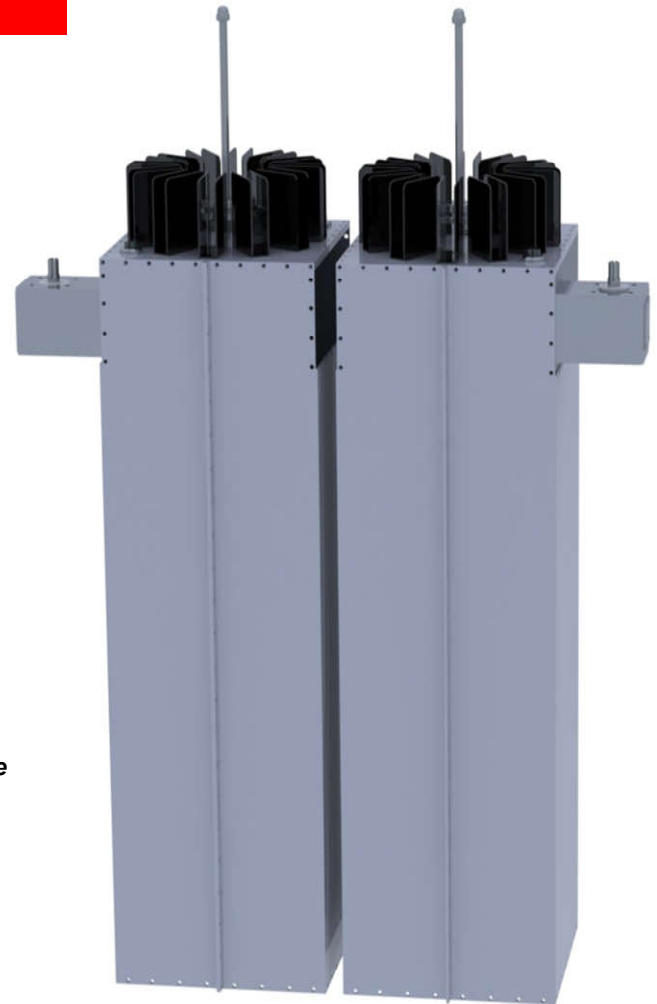


FFC10/C Band Pass filter

- Up to 10kW, dual cavity RF Filter for FM Radio Stations, 87.5-108MHz
- Low loss, very rugged, stable tuning over time
- Compact design with minimal space required
- Conservatively rated, high quality materials & precision crafted parts
- Designed to minimize inter-mods, harmonics or spurious emissions

Typical Specifications

Model	FFC10/C
Max Power	10kW
Impedance	50 Ohm
Frequency Range	87.5-108MHz
Insertion Loss	-0.15dB to -0.25dB Max
Return Loss +/- 150kHz	≤-26dB
Rejection +/- 3MHz	Typical ≤-30dB
Connectors	1-5/8" Flange Input/Output
Working Temperature	-4°F to 122°F
Weight	46 kg / 101 lbs
Dimensions	1400mm / 55" inches (H) 700mm / 28" inches (W) 335mm / 13" inches (L)



All features & specifications are subject to change without notice

