

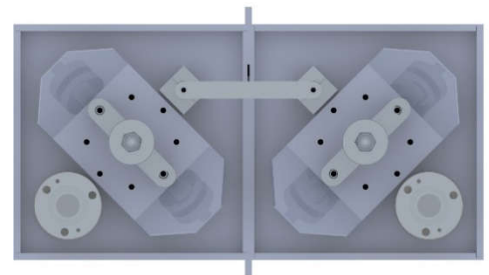


FFC3 Band Pass filter

- Up to 3000W, dual cavity RF Filter for FM Radio Stations, 87.5-108MHz
- Low loss, very rugged, stable tuning over time
- Compact design with minimal space required
- Conservatively rated, high quality materials & precision crafted parts
- Designed to minimize inter-mods, harmonics or spurious emissions

Typical Specifications

Model	FFC3
Max Power	3000W
Impedance	50 Ohm
Frequency Range	87.5-108MHz
Insertion Loss	-0.20dB to -0.31dB
Return Loss +/- 150kHz	≤-26dB
Rejection +/- 3MHz	Typical ≤-30dB
Connectors	7/8" Flange Input/Output
Working Temperature	-4°F to 122°F
Weight	30kg/66lbs
Dimensions	1300mm / 51" inches (H) 410mm / 16" inches (L) 235mm / 9 1/4" inches (W)



All features & specifications are subject to change without notice

