

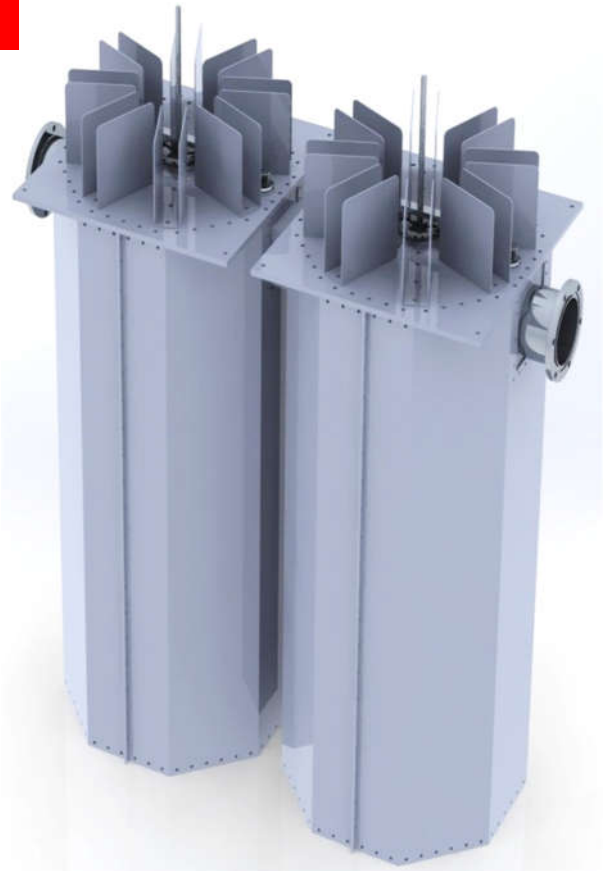


FFC30 Band Pass filter

- Up to 30kW, dual cavity RF Filter for FM Radio Stations, 87.5-108MHz
- Low loss, very rugged, stable tuning over time
- Compact design with minimal space required
- Conservatively rated, high quality materials & precision crafted parts
- Designed to minimize inter-mods, harmonics or spurious emissions

Typical Specifications

Model	FFC30
Max Power	30kW
Impedance	50 Ohm
Frequency Range	87.5-108MHz
Insertion Loss	-0.1dB to -0.15dB Max
Return Loss +/- 150kHz	≤-26dB
Rejection +/- 3MHz	Typical ≤-30dB
Connectors	3-1/8" Flange Input/Output
Working Temperature	-4°F to 122°F
Weight	65 kg / 143 lbs
Dimensions	1500mm / 59" inches (H) 1150mm / 45" inches (L) 500mm / 20" inches (W)



All features & specifications are subject to change without notice

