

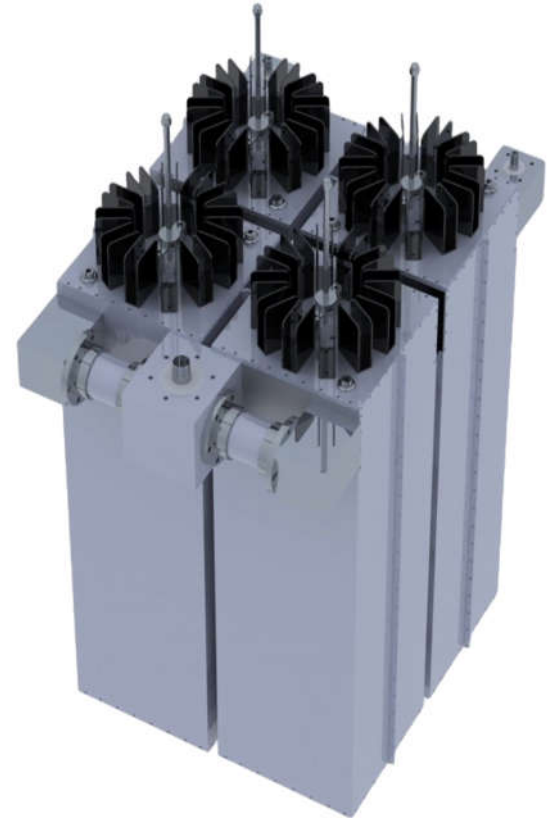


FDCSDC10/C Starpoint Combiner

- 2 Channel starpoint combiner, 2 Bandpass filters per channel
- Up to 10kW power input per channel
- Low loss, very rugged, stable tuning over time, compact design
- Conservatively rated, high quality materials & precision crafted parts
- Designed to combine multiple frequencies into a single antenna system and also minimize inter-mods, harmonics or spurious emissions

Typical Specifications

Model	FDCSDC10/C
Number of Channels	2
Max Power input per channel	10,000W
Bandpass filters per channel	2
Impedance	50 Ohm
Frequency Range	87.5-108MHz
Insertion Loss	-0.10dB to -0.16dB
Return Loss +/- 150kHz	≤-26dB
Isolation +/- 2.5MHz	Typical ≤-30dB
Input Connectors	1-5/8" Flange
Output Connector	3-1/8" Flange
Working Temperature	-4°F to 122°F
Weight	120kg/264.5lbs
Dimensions	1400 mm / 55" inches (H) 900 mm / 35.4" inches (L) 670 mm / 26.3" inches (W)



All features & specifications are subject to change without notice

