

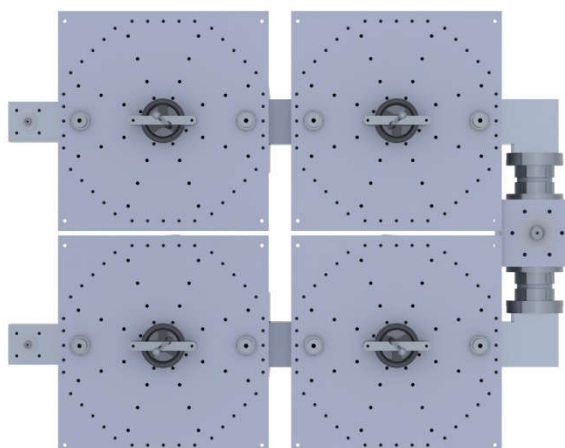
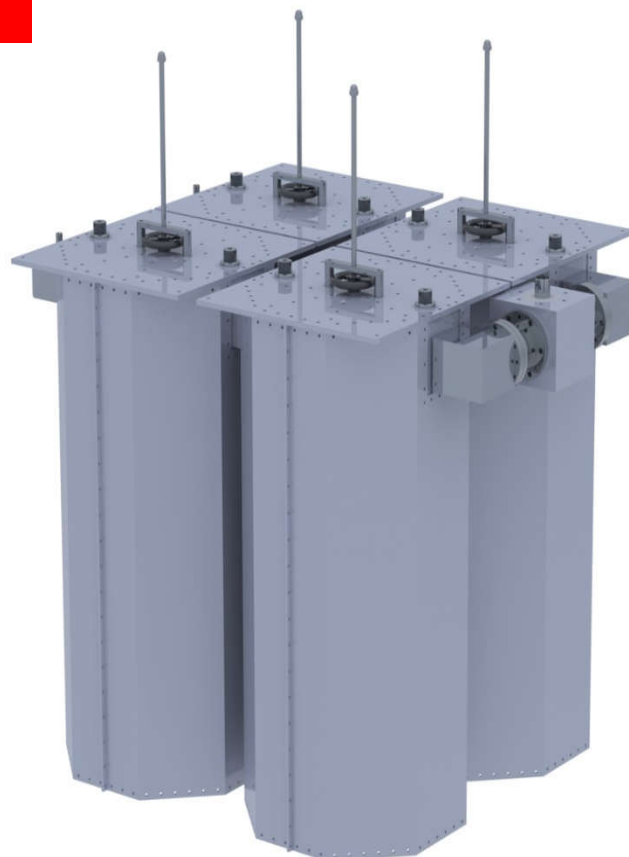


FDCSDC14 Starpoint Combiner

- 2 Channel starpoint combiner, 2 Bandpass filters per channel
- Up to 14kW power input per channel
- Low loss, very rugged, stable tuning over time, compact design
- Conservatively rated, high quality materials & precision crafted parts
- Designed to combine multiple frequencies into a single antenna system and also minimize inter-mods, harmonics or spurious emissions

Typical Specifications

Model	FDCSDC14
Number of Channels	2
Max Power input per channel	14kW
Bandpass filters per channel	2
Impedance	50 Ohm
Frequency Range	87.5-108MHz
Insertion Loss	-0.1dB to -0.13dB
Return Loss +/- 150kHz	≤-26dB
Isolation +/- 2.5MHz	Typical ≤-30dB
Input Connectors	1-5/8" Flange
Output Connector	3-1/8" Flange
Working Temperature	-4°F to 122°F
Weight	150kg/330lbs
Dimensions	1400 mm / 55" inches (H) 1215 mm / 47.8" inches (L) 980 mm / 38.5" inches (W)



All features & specifications are subject to change without notice